



TURN-KEY PROFESSIONAL OFFICE SPACE
3620 HOMESTEAD STREET
RAPID CITY, SD 57703

FOR LEASE \$24.00/SF/YR



NORTH WING - 6,836 SQUARE FEET

KW Commercial

Your Property—Our PrioritySM

2401 West Main Street, Rapid City, SD 57702
605.335.8100 | www.RapidCityCommercial.com
Keller Williams Realty Black Hills

EXCLUSIVELY LISTED BY:

Gina Plooster

Leasing Agent
605.519.0749
gina@rapidcitycommercial.com

Chris Long, SIOR, CCIM

Commercial Broker
605.939.4489
chris@rapidcitycommercial.com

David Olsen

Coldwell Banker
605.390.8852
commercialcblegacy@gmail.com

OVERVIEW

LEASE INFORMATION

NORTH WING

SQFT:	6,836 SF
Base Rate:	\$24.00/SF/YR
NNN:	TBD
Monthly:	\$13,672.00/Mo+ utilities



PROPERTY HIGHLIGHTS

- ▶ Class A professional office, premium quality finishes, move-in ready!
- ▶ Modern design with floor to ceiling windows, divided between two floors
- ▶ Outdoor balcony/mezzanine with views of the Black Hills
- ▶ 21 private offices, 2-3 large meeting rooms, M/W restroom on each level, central administrative area, private entrance with lobby/reception
- ▶ Building serves as the Immutrix corporate headquarters
- ▶ Centrally located in Rushmore Business Park off of Elk Vale Road and Homestead Street
- ▶ 10 minutes from Downtown Rapid City, Mt Rushmore Rd/ Catron Blvd, and the Ellsworth Air Force Base

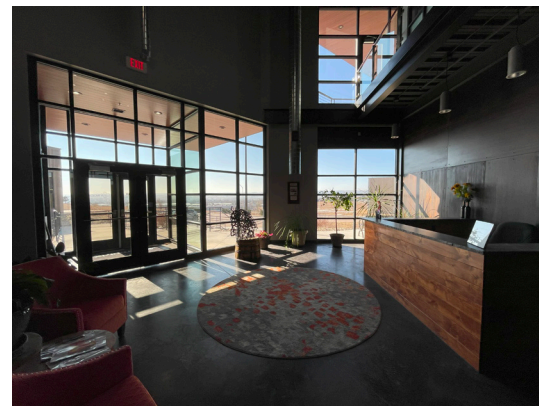
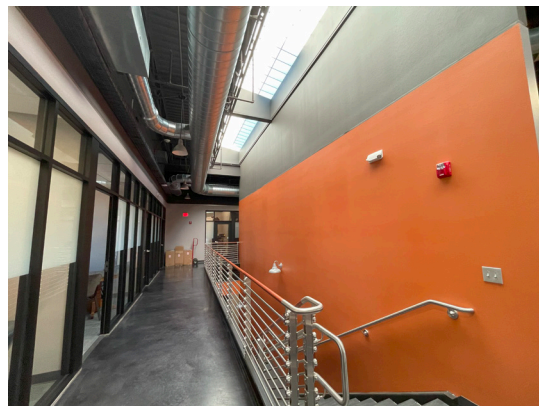
David Olsen
Coldwell Banker
605.390.8852
commercialcblegacy@gmail.com

Chris Long, SIOR, CCIM
Commercial Broker
605.939.4489
chris@rapidcitycommercial.com

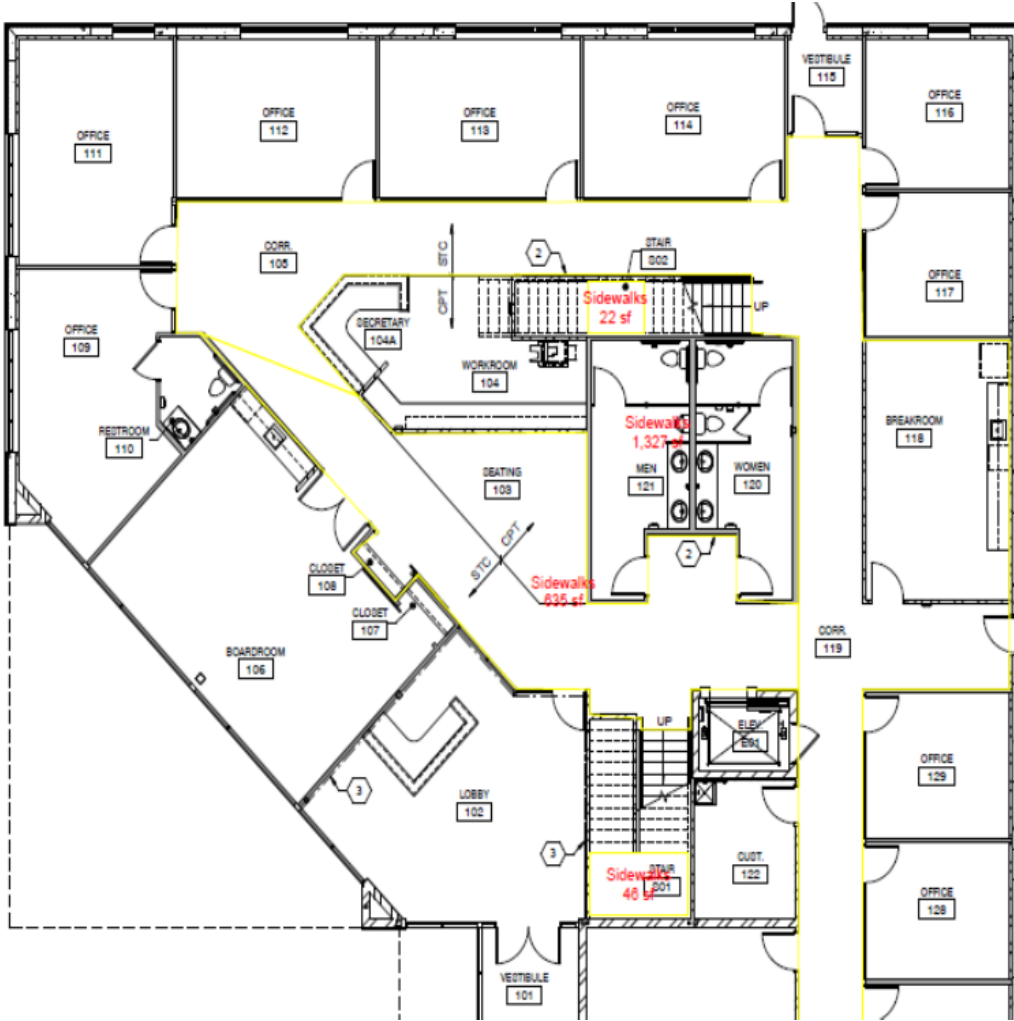
EXCLUSIVELY LISTED BY:

Gina Plooster
Leasing Agent
605.519.0749
gina@rapidcitycommercial.com

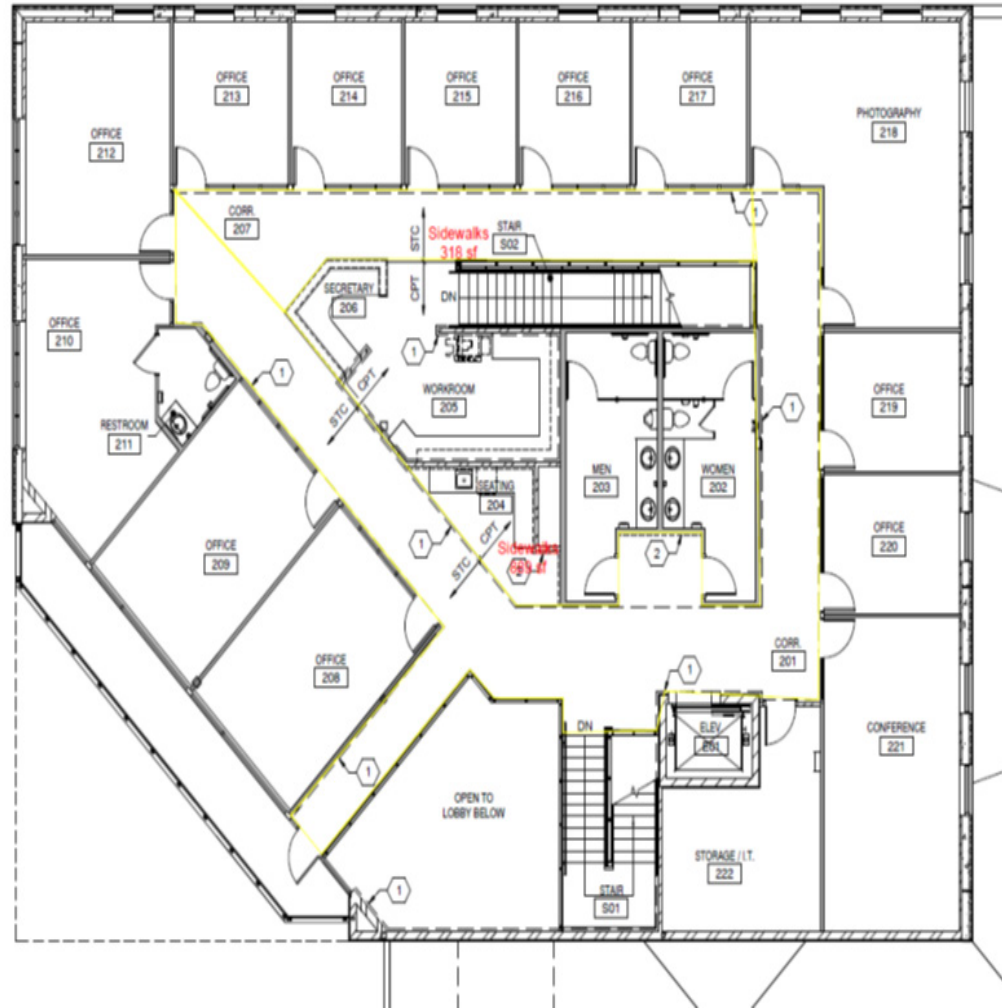
INTERIOR PHOTOS



Main Level



Upper Level





STATISTICS

WELCOME TO SOUTH DAKOTA
AND THE BLACK HILLS!

The Mount Rushmore State of South Dakota has carved a solid reputation for business friendliness. It is consistently ranked in the top five states for setting up and conducting business. Small and big companies alike are discovering South Dakota's central location and progressive business climate.

The Black Hills boasts the country's most recognized national monument - Mt. Rushmore - bringing millions of tourists from all over the world to Western South Dakota every year. For the past 9 years, South Dakota tourism has posted an increase in visitation, visitor spending and overall impact on the state's economy with 14.4 million visitors to South Dakota, \$4.7 billion in visitor spending, and 56,826 jobs sustained by the tourist industry.

BUSINESS FRIENDLY TAXES

- NO corporate income tax
- NO franchise or capital stock tax
- NO personal property or inventory tax
- NO personal income tax
- NO estate and inheritance tax



REGIONAL STATISTICS

Rapid City PUMA Population	189,754
Rapid City Population Growth	1.46% YoY
Rapid City Unemployment Rate	2.3%
PUMA Median Income	\$57,977

SD TOURISM 2021 STATISTICS

Room nights	↑	33%
Park Visits	↑	11%
Total Visitation	↑	28%
Visitor Spending	↑	28%

RAPID CITY

- #1 Outdoor Life–Best hunting and fishing town
- #4 CNN Money–Best Place to Launch a Business
- #4 Wall Street Journal–Emerging Housing Markets
- #4 WalletHub–Best Places to rent
- #11 Forbes–Best Small City for Business
- #16 Top 100 Best Places to Live

SOUTH DAKOTA

- #1 Best State for Starting a Business
- #1 America's Friendliest State for Small Business
- #2 Best State for Small Business Taxes
- #2 Best Business Climate in the US
- #2 Best State for Quality of Life
- #2 Best State for Overall Well-Being and Happiness
- #2 Business Tax Climate by the Tax Foundation
- #3 US News Fiscal Stability 2019 list
- #3 Small Business Policy Index 2018 list